

# Caroma *Care*



[specify.caroma.com.au](http://specify.caroma.com.au)

## **The Caroma Care 500 Wall Basin**

Practical functionality meets optimal compliancy with the Caroma Care 500 Wall Basin, offering the perfect solution for hospital & health facilities and commercial bathrooms.

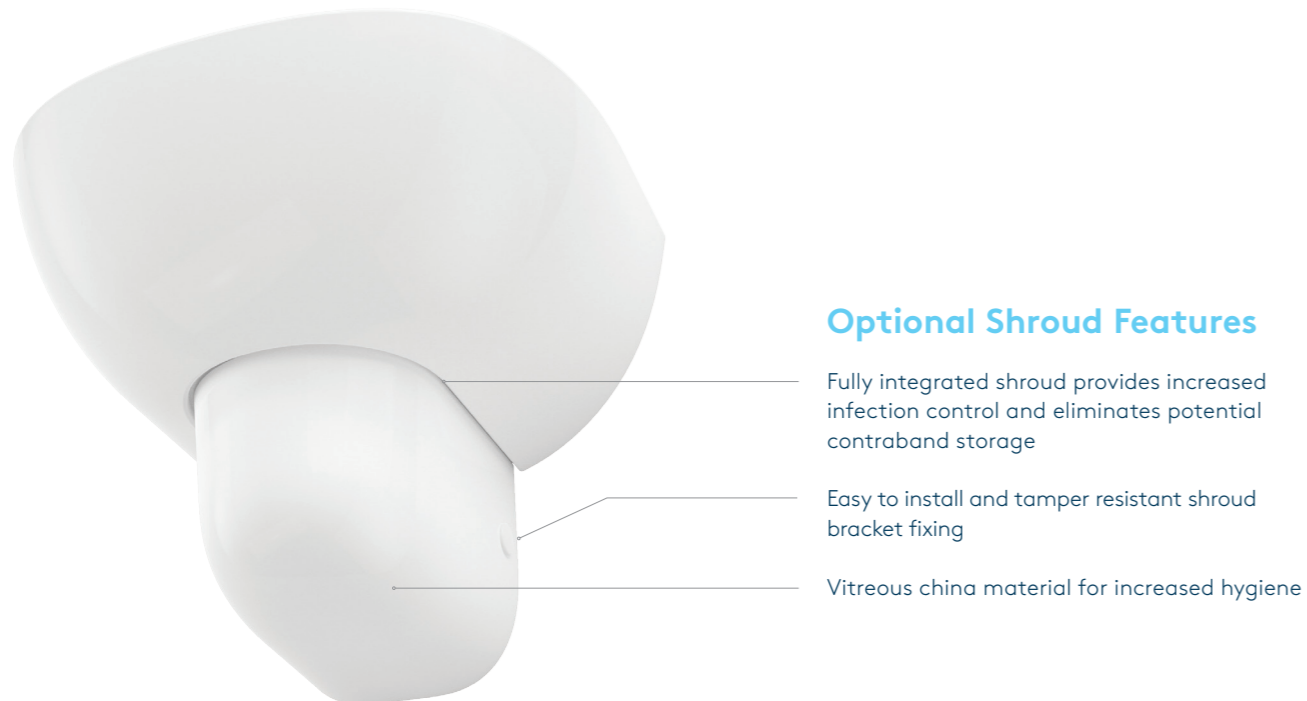
# The Caroma Care 500 Wall Basin

Caroma offers specialised and compliant solutions and is recognised as a leader in design and engineering. The extensive Care range offers innovation and practicality, without compromising on style, an exciting new addition to the care basin range is the Care 500 Wall Basin. The Wall Basin is specifically designed to meet Type C - hospital requirements for a non clinical basin, making it ideal for areas requiring general hand washing. It is compatible with a range of care and hospital specific tapware whilst meeting AS1428.1-2009 Amd.1 requirements. Featuring optimal basin waste and tapware landing with an integrated shroud, the Caroma Care 500 Wall Basin is ideal for infection and hygiene management – the perfect solution for hospital and health facilities.

## Features



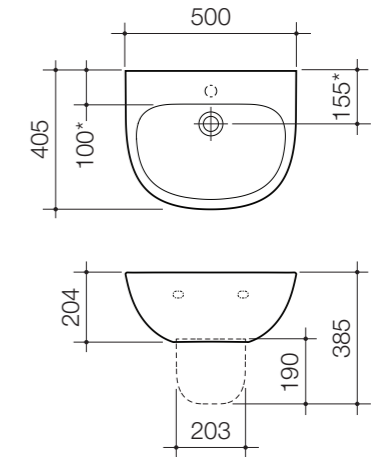
## Optional Shroud Features



## Recommended tapware options for the Caroma Care 500 Wall Basin



Caroma Care 500 Wall Basin matched with Skandic 150mm Care Basin Mixer Hot & Cold



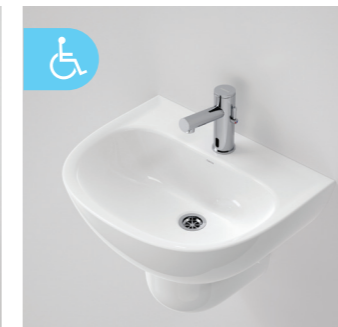
### FEATURES:

\*Optimal basin waste and tapware landing projections reduce potential splashing caused by the water stream from the tapware flowing directly into the basin waste.

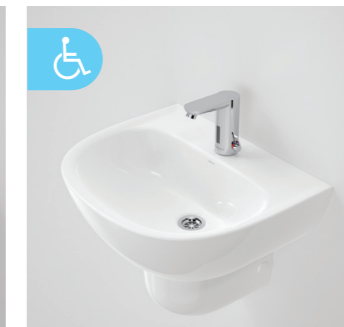
Caroma Care 500 Wall Basin 0TH (without shroud) [873200W](#)  
 Caroma Care 500 Wall Basin 1TH (without shroud) [873210W](#)  
 Caroma Care Shroud [873170W](#)



Caroma G-Series Underslung Wall Sink Set [G20004C4A](#)  
 160mm outlet, 65mm levers



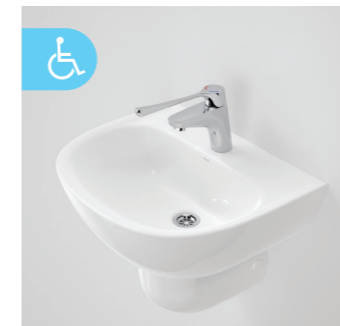
Caroma G-Series E Hands-Free Basin Mixer (Adj Temp) [G16004E6A](#)



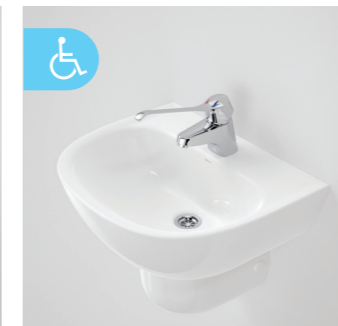
Schell Celis Electronic Basin Mixer [012650699](#)



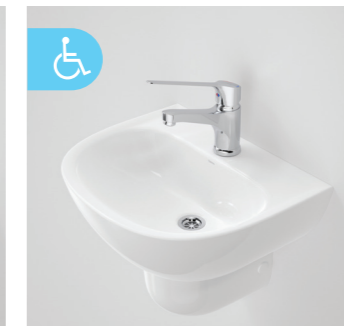
Hansa Medica Prado Basin Mixer [014222760037](#)



Dorf Flickmixer Plus Care Basin Mixer [4560.045A](#)



Caroma Nordic Care Basin Mixer [90965C5A](#)



Skandic 150mm Care Basin Mixer Hot & Cold [90991C5A](#)



Caroma Acqua Care Basin Mixer [90989C5A](#)

The Caroma Care 500 Wall Basin is suitable for the following applications:

---

 Hospitals & Health

 Aged Care

 Commercial

 Public Venues

 Shopping Centres

**Caroma**  
*Care*

For more information call **13 14 16** or visit [specify.caroma.com.au](http://specify.caroma.com.au)

 **GWA**  
Bathrooms & Kitchens

©Copyright 2015, Caroma Industries Ltd. ABN 35 000 189 499. All rights reserved. Material and design specifications subject to change without notice. Product colour reproduction is as near to actual product colour as production methods allow. Warning: Products in this flyer are the subject of registered designs and patents. ® is a registered trademark of Caroma Industries. This flyer relates to Australian products only and some product, design or specifications may differ in other countries.

